



AJMERA
i-LAND

WHERE FUTURE LIVES

WADALA (E)

INTELLIGENT.
INTUITIVE.
IMAGINATION.



A TREASURED HERITAGE OF TRUST AND HAPPINESS

Over the last 51 years, Ajmera has been the most preferred choice of thousands of families. We've built a legacy of creating mega structures that have become a benchmark of quality in real estate. We don't just craft exceptional homes, we aspire to deliver dreams.



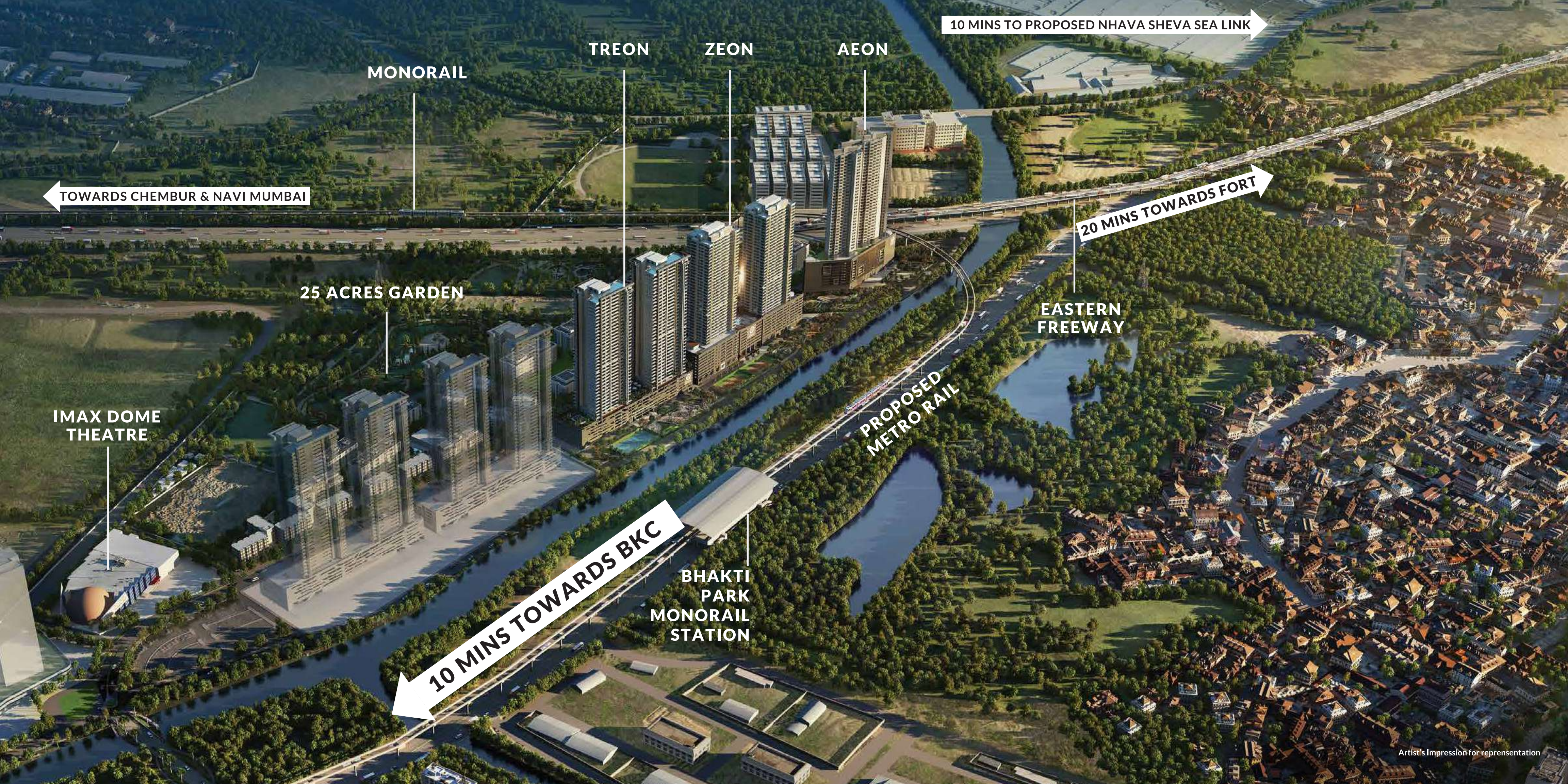
AJMERA
i-LAND
WHERE FUTURE LIVES
WADALA (E)

A HERALD OF THE FUTURE

100 ACRES OF INTEGRATED TOWNSHIP

Mumbai's one and only interconnected township, Ajmera i-Land brings you the future, served on a golden platter of uber luxurious living. Here you will find countless world-class amenities set against the arresting backdrop of natural wonder.

It boasts of non-parallel living spaces, education, leisure and healthcare amenities along with a sports academy, excitement zone and so much more. Mornings here come alive with people setting off to work without the worry of anything being too far off, thanks to amazing connectivity. While evenings bring the pleasure of watching the sun set into the Arabian Sea as the city's silhouette lights up. With the Monorail and the Eastern Freeway being a stone's throw away, Ajmera i-Land stands second to none.



TOWARDS CHEMBUR & NAVI MUMBAI

MONORAIL

TREON

ZEON

AEON

10 MINS TO PROPOSED NHAVA SHEVA SEA LINK

20 MINS TOWARDS FORT

25 ACRES GARDEN

IMAX DOME
THEATRE

EASTERN
FREEWAY

PROPOSED
METRO RAIL

10 MINS TOWARDS BKC

BHAKTI
PARK
MONORAIL
STATION



AJMERA TREON

AJMERA ZEON

AJMERA AEON



AJMERA TREON

AJMERA ZEON

AJMERA AEON



WADALA TAKES A GIANT LEAP INTO THE FUTURE AND THE WORLD WATCHES IN AWE.

From the incredible Monorail to the expansive Eastern Freeway,
the list of Wadala's triumphs are endless. As this hotbed of
development thrives with energy and drives progress ahead,
we can easily title Wadala as the headquarters of future living.

✱

WADALA

THE ADDRESS OF THE FUTURE

✱

From the first ever planned suburb to becoming one of the most prime real estate in Mumbai, Wadala has come a long way. Over the years it has become the city's heartbeat, with all major infrastructure and lifestyle amenities gravitating to it. With the city's major transport routes like the Eastern freeway, Mumbai-Pune Expressway, Monorail and several others running right through it, Wadala is transformed into one of the best platforms for a bright future to unfold.



Every essential is close at hand



RESTAURANTS | SHOPPING | CINEMA | HOSPITAL | AIRPORT



Artist's Impression for representation

AJMERA Treon

at Wadala (East)




THE LAND WHERE FUTURE RESIDES.



Treon, the third tower at Ajmera i-Land is the emblem of a tomorrow that you've always envisioned. As it rises above the ground, the daily drudgery of hectic city life dissolves away into the background, and instead, a harmonious future takes centerstage. Its 2, 3 and 4 BHK apartments combine luxury, comfort, and convenience with an international finesse. With 5 levels of parking, 2 wings - 4 apartments per floor, and the entire gamut of world-class amenities designed to smooth away life's creases, the iconic Ajmera Treon promises to be way ahead of its time.




A living room that looks like a beautiful dream come true.

A modern, high-end kitchen featuring a curved island with a white countertop and dark grey base. The island has a built-in sink and a modern faucet. To the left of the island is a tall, dark grey shelving unit with open shelves displaying various glassware and jars. The wall behind the island is covered in large, light-colored marble tiles. A large window with a geometric pattern is visible in the background. To the right of the island is a built-in oven and a refrigerator. The kitchen is illuminated by a modern pendant light with three glass shades. The floor is made of large, light-colored tiles.

A future-ready kitchen with palatial servings of luxury.

The above image shown is of show apartment for reference purpose only. The furniture and fixtures shown in the above flat are not part of the apartment amenities.

A modern master bedroom featuring a large bed with a tufted headboard and a matching ottoman. The room has a large window with a city view, a modern chair, and a large vase of flowers. The lighting is warm and ambient, with a chandelier and bedside lamps. The overall aesthetic is contemporary and luxurious.

A collision of comfort and luxury,
the master bedroom couldn't be more perfect.

The above image shown is of show apartment for reference purpose only. The artistic image of the furniture and fixtures shown in the above flat are not part of the apartment amenities.



Guest bedrooms, crafted to impress.

The above image shown is of show apartment for reference purpose only. The artistic image of the furniture and fixtures shown in the above flat are not part of the apartment amenities.



Elegance in every inch!

The above image shown is of show apartment for reference purpose only. The artistic image of the furniture and fixtures shown in the above flat are not part of the apartment amenities.

YOU'VE ALWAYS LOOKED
AHEAD IN LIFE
NOW, LOOK *beyond.*

Actual view from i-Land

The above image shown is of show apartment for reference purpose only. The artistic image of the furniture and fixtures shown in the above flat are not part of the apartment amenities.

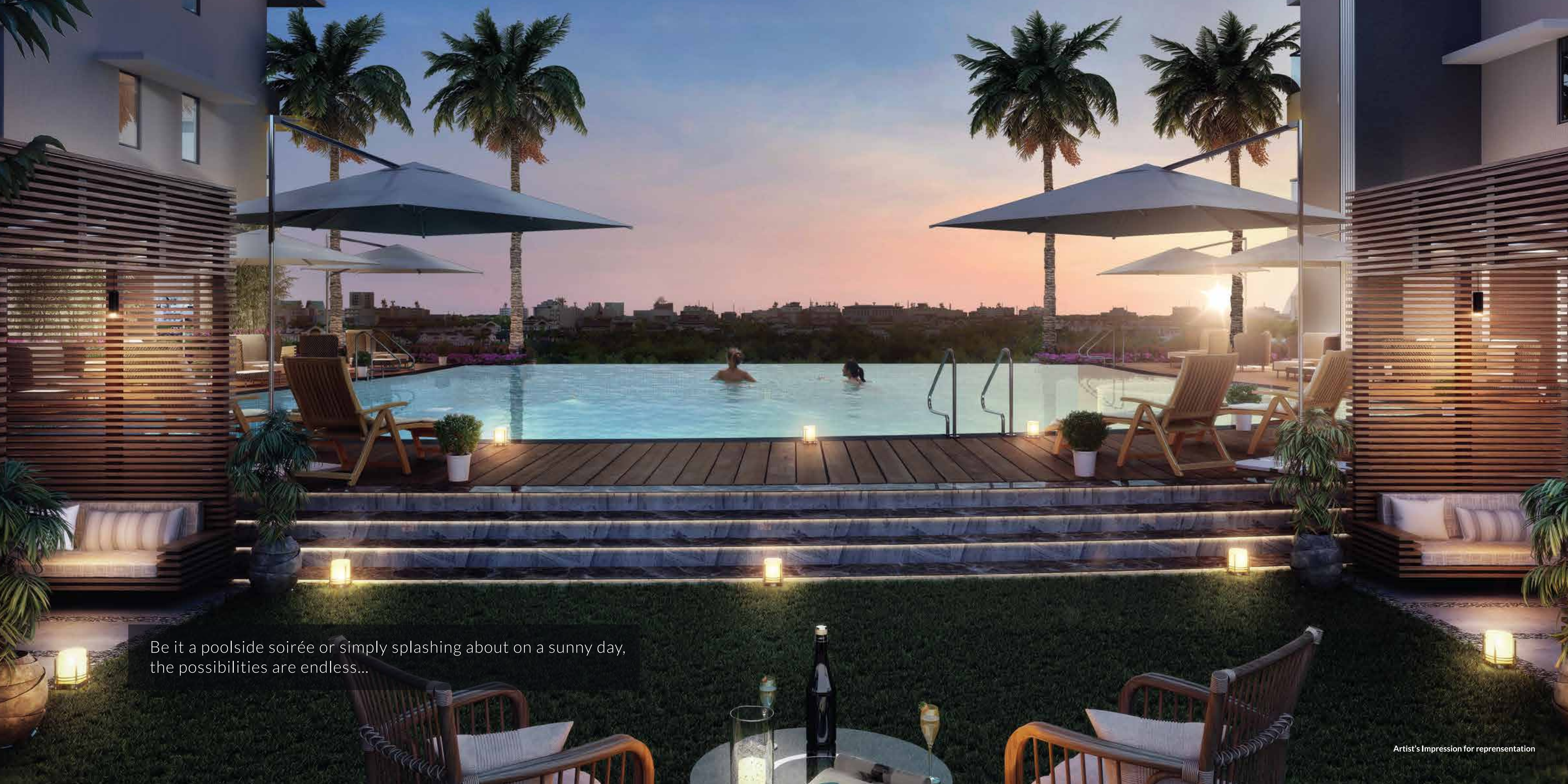


Artist's Impression for representation

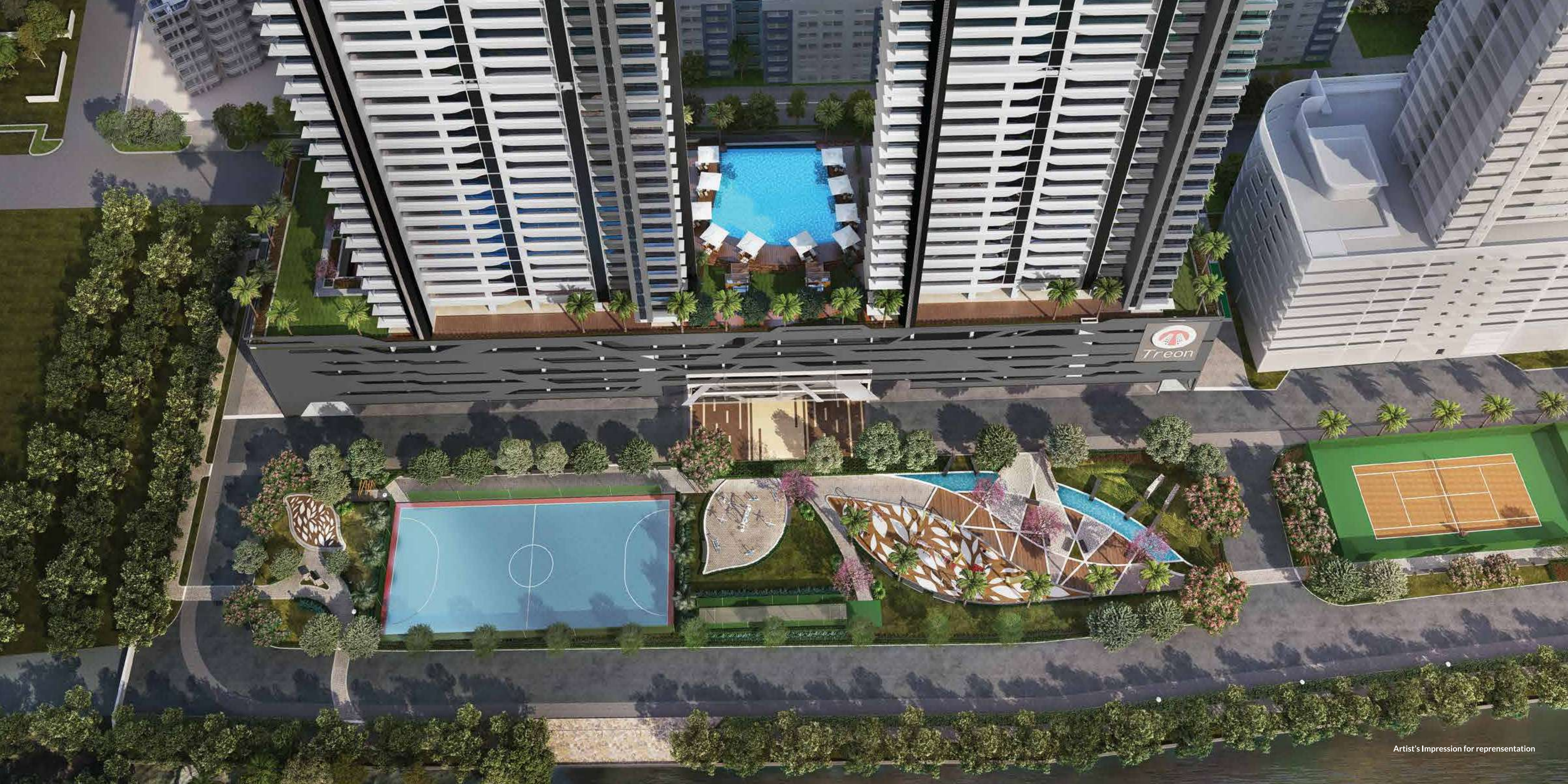
— ✱ —

GREAT AMENITIES FOR A GREATER TOMORROW

— ✱ —



Be it a poolside soirée or simply splashing about on a sunny day, the possibilities are endless...



RAISING THE BENCHMARK OF FINE LIVING

Actual Grand Entrance Lobby



GYMNASIUM



BILLIARDS ROOM



SWIMMING POOL

Amenities at Club level (Podium top)

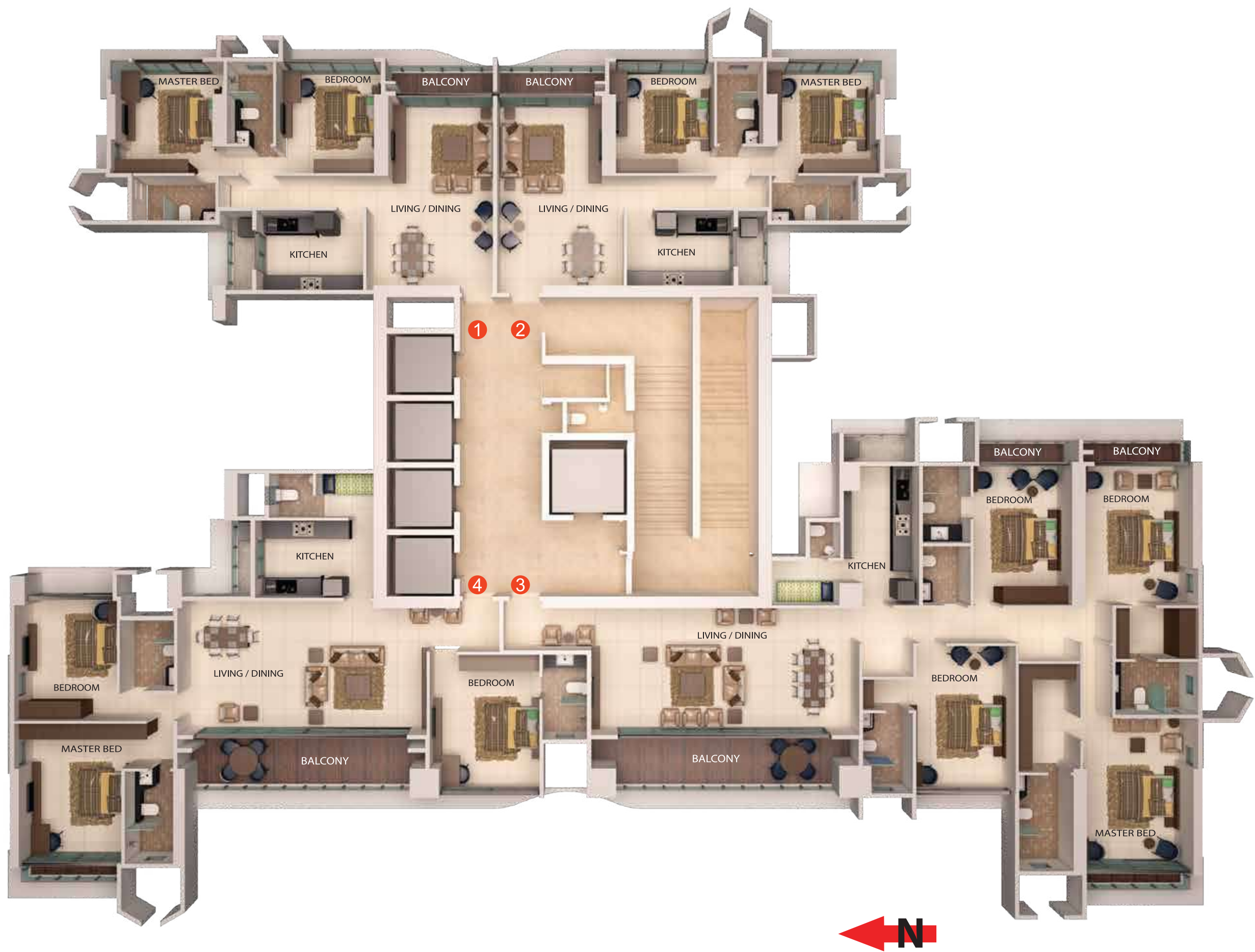
- Swimming Pool
- Childrens Pool
- Well-equipped Gymnasium
- Steam and Sauna & Jacuzzi Health Spa
- Cafeteria
- Library
- Table Tennis
- Squash Court
- Jogging Track

Amenities at Ground level

- Multiple games court
- Dedicated children play area
- Reflexology Path
- Football Field
- Yoga Deck
- Lawn Tennis Court
- i-Safe Locker facility
- Pet Park

Vegetable farming zone
(available in between
Ajmera Aeon and Ajmera Zeon)

TYPICAL FLOOR PLAN



4 BHK UNIT PLAN					
SR.NO.	NAME OF ROOM	L (mtr)	B (mtr)	L (ft)	B (ft)
1	LIVING & DINING	9.144	4.359	30'-0"	14'-3"
2	KITCHEN	2.621	4.755	8'-6"	15'-6"
3	BEDROOM 1	3.383	5.029	11'-1"	16'-5"
4	BEDROOM 2	3.383	4.724	11'-10"	15'-5"
5	BEDROOM 3	3.871	4.755	12'-7"	15'-6"
6	MASTER BEDROOM	3.932	5.243	12'-9"	17'-2"
7	SER RM	2.347	1.253	7'-7"	4'-11"
8	POOJA ROOM	1.707	1.189	5'-6"	3'-9"
9	DRESSER 1	1.707	2.164	5'-6"	7'-1"
10	TOILET 1	1.707	2.743	5'-6"	9'-0"
11	DRESSER 2	2.073	2.774	6'-8"	9'-10"
12	TOILET 2	2.073	3.231	6'-8"	10'-6"
13	DRESSER 3	2.774	1.737	9'-1"	5'-7"
14	TOILET 3	3.018	1.737	9'-9"	5'-7"
15	TOILET 4	1.554	2.652	5'-1"	8'-7"
16	POWDER	1.554	1.981	5'-1"	6'-5"
17	TOILET 5	1.036	1.189	3'-4"	3'-10"

3 BHK UNIT PLAN					
SR.NO.	NAME OF ROOM	L (mtr)	B (mtr)	L (ft)	B (ft)
1	LIVING / DINING	8.504	4.602	27'-9"	15'-1"
2	KITCHEN	4.023	2.621	13'-2"	8'-6"
3	BEDROOM 1	3.78	4.785	12'-4"	15'-7"
4	BEDROOM 2	3.536	4.145	11'-6"	13'-6"
5	MASTER BEDROOM	3.627	4.755	11'-9"	15'-6"
6	TOILET 1	1.494	2.926	4'-10"	9'-6"
7	TOILET 2	1.768	2.408	5'-8"	7'-10"
8	TOILET 3	1.859	3.17	6'-1"	10'-4"
9	TOILET 4	1.494	1.433	4'-9"	4'-7"
10	SER. RM	1.92	1.433	6'-3"	4'-7"
11	ENTRANCE	2.438	1.524	8'-0"	5'-0"
12	PASSAGE	1.92	1.006	6'-3"	3'-3"

2 BHK UNIT PLAN					
SR.NO.	NAME OF ROOM	L (mtr)	B (mtr)	L (ft)	B (ft)
1	LIVING / DINING	3.627	6.492	11'-9"	21'-3"
2	KITCHEN	3.627	2.56	11'-10"	8'-4"
3	BEDROOM	3.536	3.81	11'-6"	12'-5"
4	MASTER BEDROOM	3.901	3.84	12'-8"	12'-6"
5	TOILET	1.585	2.743	5'-2"	9'-0"
6	MASTER TOILET	2.865	1.494	9'-4"	4'-10"
7	WIDE PASSAGE	5.669	1.006	18'-6"	3'-3"

Efficiency approx. 93.3% per floor

4 BHK UNIT PLAN



4 BHK UNIT PLAN					
SR.NO.	NAME OF ROOM	L (mtr)	B (mtr)	L (ft)	B (ft)
1	LIVING & DINING	9.144	4.359	30'-0"	14'-3"
2	KITCHEN	2.621	4.755	8'-6"	15'-6"
3	BEDROOM 1	3.383	5.029	11'-1"	16'-5"
4	BEDROOM 2	3.383	4.724	11'-10"	15'-5"
5	BEDROOM 3	3.871	4.755	12'-7"	15'-6"
6	MASTER BEDROOM	3.932	5.243	12'-9"	17'-2"
7	SER RM	2.347	1.253	7'-7"	4'-11"
8	POOJA ROOM	1.707	1.189	5'-6"	3'-9"
9	DRESSER 1	1.707	2.164	5'-6"	7'-1"
10	TOILET 1	1.707	2.743	5'-6"	9'-0"
11	DRESSER 2	2.073	2.774	6'-8"	9'-10"
12	TOILET 2	2.073	3.231	6'-8"	10'-6"
13	DRESSER 3	2.774	1.737	9'-1"	5'-7"
14	TOILET 3	3.018	1.737	9'-9"	5'-7"
15	TOILET 4	1.554	2.652	5'-1"	8'-7"
16	POWDER	1.554	1.981	5'-1"	6'-5"
17	TOILET 5	1.036	1.189	3'-4"	3'-10"

Efficiency approx. 93.3% per floor

3 BHK UNIT PLAN



3 BHK UNIT PLAN					
SR.NO.	NAME OF ROOM	L (mtr)	B (mtr)	L (ft)	B (ft)
1	LIVING / DINING	8.504	4.602	27'-9"	15'-1"
2	KITCHEN	4.023	2.621	13'-2"	8'-6"
3	BEDROOM 1	3.78	4.785	12'-4"	15'-7"
4	BEDROOM 2	3.536	4.145	11'-6"	13'-6"
5	MASTER BEDROOM	3.627	4.755	11'-9"	15'-6"
6	TOILET 1	1.494	2.926	4'-10"	9'-6"
7	TOILET 2	1.768	2.408	5'-8"	7'-10"
8	TOILET 3	1.859	3.17	6'-1"	10'-4"
9	TOILET 4	1.494	1.433	4'-9"	4'-7"
10	SER. RM	1.92	1.433	6'-3"	4'-7"
11	ENTRANCE	2.438	1.524	8'-0"	5'-0"
12	PASSAGE	1.92	1.006	6'-3"	3'-3"

Efficiency approx. 93.3% per floor

2 BHK UNIT PLAN



2 BHK UNIT PLAN					
SR.NO.	NAME OF ROOM	L (mtr)	B (mtr)	L (ft)	B (ft)
1	LIVING / DINING	3.627	6.492	11'-9"	21'-3"
2	KITCHEN	3.627	2.56	11'-10"	8'-4"
3	BEDROOM	3.536	3.81	11'-6"	12'-5"
4	MASTER BEDROOM	3.901	3.84	12'-8"	12'-6"
5	TOILET	1.585	2.743	5'-2"	9'-0"
6	MASTER TOILET	2.865	1.494	9'-4"	4'-10"
7	WIDE PASSAGE	5.669	1.006	18'-6"	3'-3"

Efficiency approx. 93.3% per floor

OUR LANDMARKS CREATE HEADLINES



Ajmera Group celebrates its Golden Jubilee with Industry Stalwarts

Announces 5 international projects and several other projects across country

Ajmera Group, recognized as one of India's premium Real Estate developers, celebrated its golden jubilee on the eve of their founder Late Chotalal S. Ajmera's birthday, 27th of September, 2018 at NSCI, Worli in Mumbai. The event saw the entire builder community along with noted bankers and top industrialists come together to rejoice the glorious 50 years of Ajmera Group. As a part of the expansion plan this year, the group company Ajmera Realty & Infra India Limited is proud to announce their first international project in Bahrain along with the launch of 4 projects in London across prime locations 1 Liverpool, Bishop Avenue, Southall and Kingston. With a strong vision and determination to take the company global, Chairman and Managing Director of Ajmera Group, Mr. Rajnikant Ajmera said "This is indeed a huge step for us, all the members have worked really hard in bringing Ajmera Group where it is today. It would really like to appreciate the hard and smart work the team has done and hope to continue delivering smiles and achieving extraordinary benchmarks for the domestic markets as they

going to launch a residential project in the vibrant city of Rajkot followed by the launch of Ajmera Nucleus in Bangalore and yet another project in their prime city of Mumbai. Ajmera Group is also looking to venture into Power and Education sector as they have announced to launch a 15MW Sunborne energy plant in Kutch as well as the announcement of a new school in Wadala, Mumbai. Mr. Deepak Parekh, Chairman of HDFC Bank and Mr. Haifeez Contractor, architect of several skyscrapers of Mumbai were felicitated at the event for their unparalleled contribution to the city and the real estate industry. The Group also felicitated the NSCI Mumbai Middle Cretches for their extensive work over 35 years by setting up about 550 day-care centres at construction sites to educate and empower over 100000 children belonging to the families of the construction workers in Delhi, Mumbai and Pune. Imparting trust, happiness and quality for half a century, Ajmera Group has given 45,000 families a reason to smile and has successfully delivered 28 million sq. ft. of space. Pioneers of the 'township' concept, Ajmera Group is widely known for their expansion projects across the

country introducing the mall culture to Mumbai by constructing the first ever 'Citi Mall' and dome theatre which is one of its kind till date, are some examples of their foresightedness. About Ajmera: Founded in 1968, about 50 years back the group is well known for bringing the mall culture in India alongside developing township. They have developed Asia's largest private sector township in 1992 at Mira Road with approx 17000 apartments. Ajmera group has enriched 28 million sq. ft. of delivered space in the country. Quality, innovation, construction technology, comfort, aesthetic appeal and maximum value for your money are few attributes that enrich Ajmera's DNA. (India) based. The reach and interest of the Ajmera Group has only grown with time and has spread to various fields such as steel, cement, power, education, sports and medical welfare. The company now has a strong presence in and around Mumbai, Pune, Ahmedabad, Surat, Rajkot and Bangalore as well as an international project in Bahrain.

country introducing the mall culture to Mumbai by constructing the first ever 'Citi Mall' and dome theatre which is one of its kind till date, are some examples of their foresightedness. About Ajmera: Founded in 1968, about 50 years back the group is well known for bringing the mall culture in India alongside developing township. They have developed Asia's largest private sector township in 1992 at Mira Road with approx 17000 apartments. Ajmera group has enriched 28 million sq. ft. of delivered space in the country. Quality, innovation, construction technology, comfort, aesthetic appeal and maximum value for your money are few attributes that enrich Ajmera's DNA. (India) based. The reach and interest of the Ajmera Group has only grown with time and has spread to various fields such as steel, cement, power, education, sports and medical welfare. The company now has a strong presence in and around Mumbai, Pune, Ahmedabad, Surat, Rajkot and Bangalore as well as an international project in Bahrain.



Ajmera Group celebrates its Golden Jubilee with Industry Stalwarts

Ajmera Group, recognized as one of India's premium Real Estate developer, celebrated its golden jubilee on the eve of their founder Late Chotalal S. Ajmera's birthday, 27th of September, 2018 at NSCI, Worli in Mumbai. The event saw the entire builder community along with noted bankers and top industrialists come together to rejoice glorious 50 years of Ajmera Group. As a part of the expansion plan this year, the group company Ajmera Realty & Infra India Limited is proud to announce their first international project in Bahrain along with the launch of 4 projects in London across prime locations 1 Liverpool, Bishop Avenue, Southall and Kingston. With a strong vision and determination to take the company global, Chairman and Managing Director of Ajmera Group Mr. Rajnikant Ajmera said "This is indeed a huge step

for us, all the members have worked really hard in bringing Ajmera Group where it is today. It would really like to appreciate the hard and smart work the team has done and hope to continue delivering smiles and achieving extraordinary benchmarks for the domestic markets as they going to launch a residential project in the vibrant city of Rajkot followed by the launch of Ajmera Nucleus in Bangalore and yet another project in their prime city of Mumbai. Ajmera Group is also looking to venture into Power and Education sector as they have announced to launch a 15 MW Sunborne energy plant in Kutch as well as the announcement of a new school in Wadala, Mumbai. Mr. Deepak Parekh, Chairman of HDFC Bank and Mr. Haifeez Contractor, architect of several skyscrapers of Mumbai were felicitated at the event for their unparalleled contribution to the city and the real estate industry. The Group also felicitated the NSCI Mumbai Mobile Cretches for their extensive work over 35 years by setting up about 550 day-care centres at construction sites to educate and empower over 100000 children belonging to the families of the construction workers in Delhi, Mumbai and Pune. Imparting trust, happiness and quality for half a century, Ajmera Group has given 45,000 families a reason to smile and has successfully delivered 28 million sq. ft. of space. Pioneers of the 'township' concept, Ajmera Group is widely known for their expansion projects across the country introducing the mall culture to Mumbai by constructing the first-ever 'Citi Mall' and dome theatre which is one of its kind till date, are some examples of their foresightedness.

country introducing the mall culture to Mumbai by constructing the first ever 'Citi Mall' and dome theatre which is one of its kind till date, are some examples of their foresightedness. About Ajmera: Founded in 1968, about 50 years back the group is well known for bringing the mall culture in India alongside developing township. They have developed Asia's largest private sector township in 1992 at Mira Road with approx 17000 apartments. Ajmera group has enriched 28 million sq. ft. of delivered space in the country. Quality, innovation, construction technology, comfort, aesthetic appeal and maximum value for your money are few attributes that enrich Ajmera's DNA. (India) based. The reach and interest of the Ajmera Group has only grown with time and has spread to various fields such as steel, cement, power, education, sports and medical welfare. The company now has a strong presence in and around Mumbai, Pune, Ahmedabad, Surat, Rajkot and Bangalore as well as an international project in Bahrain.

country introducing the mall culture to Mumbai by constructing the first ever 'Citi Mall' and dome theatre which is one of its kind till date, are some examples of their foresightedness. About Ajmera: Founded in 1968, about 50 years back the group is well known for bringing the mall culture in India alongside developing township. They have developed Asia's largest private sector township in 1992 at Mira Road with approx 17000 apartments. Ajmera group has enriched 28 million sq. ft. of delivered space in the country. Quality, innovation, construction technology, comfort, aesthetic appeal and maximum value for your money are few attributes that enrich Ajmera's DNA. (India) based. The reach and interest of the Ajmera Group has only grown with time and has spread to various fields such as steel, cement, power, education, sports and medical welfare. The company now has a strong presence in and around Mumbai, Pune, Ahmedabad, Surat, Rajkot and Bangalore as well as an international project in Bahrain.

country introducing the mall culture to Mumbai by constructing the first ever 'Citi Mall' and dome theatre which is one of its kind till date, are some examples of their foresightedness. About Ajmera: Founded in 1968, about 50 years back the group is well known for bringing the mall culture in India alongside developing township. They have developed Asia's largest private sector township in 1992 at Mira Road with approx 17000 apartments. Ajmera group has enriched 28 million sq. ft. of delivered space in the country. Quality, innovation, construction technology, comfort, aesthetic appeal and maximum value for your money are few attributes that enrich Ajmera's DNA. (India) based. The reach and interest of the Ajmera Group has only grown with time and has spread to various fields such as steel, cement, power, education, sports and medical welfare. The company now has a strong presence in and around Mumbai, Pune, Ahmedabad, Surat, Rajkot and Bangalore as well as an international project in Bahrain.

country introducing the mall culture to Mumbai by constructing the first ever 'Citi Mall' and dome theatre which is one of its kind till date, are some examples of their foresightedness. About Ajmera: Founded in 1968, about 50 years back the group is well known for bringing the mall culture in India alongside developing township. They have developed Asia's largest private sector township in 1992 at Mira Road with approx 17000 apartments. Ajmera group has enriched 28 million sq. ft. of delivered space in the country. Quality, innovation, construction technology, comfort, aesthetic appeal and maximum value for your money are few attributes that enrich Ajmera's DNA. (India) based. The reach and interest of the Ajmera Group has only grown with time and has spread to various fields such as steel, cement, power, education, sports and medical welfare. The company now has a strong presence in and around Mumbai, Pune, Ahmedabad, Surat, Rajkot and Bangalore as well as an international project in Bahrain.

country introducing the mall culture to Mumbai by constructing the first ever 'Citi Mall' and dome theatre which is one of its kind till date, are some examples of their foresightedness. About Ajmera: Founded in 1968, about 50 years back the group is well known for bringing the mall culture in India alongside developing township. They have developed Asia's largest private sector township in 1992 at Mira Road with approx 17000 apartments. Ajmera group has enriched 28 million sq. ft. of delivered space in the country. Quality, innovation, construction technology, comfort, aesthetic appeal and maximum value for your money are few attributes that enrich Ajmera's DNA. (India) based. The reach and interest of the Ajmera Group has only grown with time and has spread to various fields such as steel, cement, power, education, sports and medical welfare. The company now has a strong presence in and around Mumbai, Pune, Ahmedabad, Surat, Rajkot and Bangalore as well as an international project in Bahrain.

country introducing the mall culture to Mumbai by constructing the first ever 'Citi Mall' and dome theatre which is one of its kind till date, are some examples of their foresightedness. About Ajmera: Founded in 1968, about 50 years back the group is well known for bringing the mall culture in India alongside developing township. They have developed Asia's largest private sector township in 1992 at Mira Road with approx 17000 apartments. Ajmera group has enriched 28 million sq. ft. of delivered space in the country. Quality, innovation, construction technology, comfort, aesthetic appeal and maximum value for your money are few attributes that enrich Ajmera's DNA. (India) based. The reach and interest of the Ajmera Group has only grown with time and has spread to various fields such as steel, cement, power, education, sports and medical welfare. The company now has a strong presence in and around Mumbai, Pune, Ahmedabad, Surat, Rajkot and Bangalore as well as an international project in Bahrain.

Ajmera Group to foray into overseas property markets

Mumbai-based builder Plans Realty Projects in London, Bahrain

Kallash Babar | ETRealty | September 22, 2018, 07:15 IST



MUMBAI: Ajmera Group is foraying into overseas markets with projects in London and Bahrain.

In London, it will develop four projects in Bishop Avenue, Southall, Kingston and Liverpool. These projects will be in residential, commercial, affordable and student housing category, the company said in a release. It expects the projects to be completed in the next 24 months.

Ajmera and Mayfair Housing's joint entity Ajmera Mayfair Realty Group will be investing Rs 1,400 crore to develop a residential tower in Bahrain. The two wings of this tower will be 45 and 53 storeys comprising 746 apartments. The project will be spread across 1.45 million sq meter of reclaimed from the Arabian Sea.

Ajmera Group announces entry into London, Bahrain

Ajmera Group announes entry into London, Bahrain Mumbai, Sep 27 () City-based realty player Ajmera Group Thursday announced its international foray into Bahrain and London with the lanuch of five projects with 10 million sqft of development.

By: PTI | Mumbai | Pushlished: September 27, 2018 10:59 PM

8 SHARES | [f](#) [t](#) [G+](#)

Ajmera Group announces entry into London, Bahrain Mumbai, Sep 27 0 City-based realty player Ajmera Group Thursday announced its international foray into Bahrain and London with the launch of five projects with 10 million sq. ft. of development. The company, in partnership with Mayfair Housing, will be developing a project in Bahrain, spread across 1.45 million sqm of reclaimed land from the sea. Ajmera and Mayfair have collectively invested Rs 1,400 crore in the project, which the company claims will be the tallest in the Gulf country.

The two towers named 'Golden Gate' will be of 45 and 53 storeys, respectively and will comprise 746 apartments. The London foray includes four projects in mixed categories from residential, commercial, affordable and student housing and ultra-luxury, the company said. "We will not stop at this, but continue to scout for opportunities in both these markets.

We will establish ourselves first and then expand into these markets," group director Dhaval Ajmera said on the occasion of its golden jubilee celebrations here. As a part of its 50th anniversary, the company is also developing 20 lakh sq. ft. in Mumbai, Bengaluru and Rajkot. Ajmera already has presence in and around Mumbai, Pune, Ahmedabad, Surat, Rajkot and Bengaluru and has delivered nearly 28 million sq. ft. of built up areas.

Ajmera Group Announces 5 international projects and several other projects across country on its Golden Jubilee celebration

Ajmera Group, recognized as one of india's premium Real Estate developer celebrated its golden jubilee on the eve of their...

Ajmera Group, recognized as one of India's premium Real Estate developer celebrated its golden jubilee on the eve of their founder Late Chotalal S. Ajmera's birthday, 27th of September, 2018 at NSCI, Worli in Mumbai. The event saw the entire builder community along with noted bankers and top industrialists come together to rejoice glorious 50 years of Ajmera Group.

For the domestic market, they are going to launch a residential project in the vibrant city of Rajkot followed by the launch of Ajmera Nucleus in Bangalore and yet another project in their prime city of Mumbai. Ajmera Group is also looking to venture into Power and Education sector as they have announced to launch a 15MW Sunborne energy plant in Kutch as well as the announcement of a new school in Wadala, Mumbai. Mr. Deepak Parekh, Chairman of HDFC Bank and Mr. Haifeez Contractor, architect of several skyscrapers of Mumbai were felicitated at the event for their unparalleled contribution to the city and the real estate industry. The Group also felicitated the NSCI Mumbai Mobile Cretches for their extensive work over 35 years by setting up about 550 day-care centres at construction sites to educate and empower over 100000 children belonging to the families of the construction workers in Delhi, Mumbai and Pune.

Some of The industry stalwarts that were present were Dr Niranjan Hiranandani, President NAREDCO, Anuj Puri, President, Anarock Property Consultants, Dharmesh Jain, Nirmal PVT Ltd. to name a few. Imparting trust, happiness and quality for half a century, Ajmera Group has given 45,000 families a reason to smile and has successfully delivered 28 million sq. ft. of space. Pioneers of the 'township' concept, Ajmera Group is widely known for their expansive projects across the count., Introducing the mall culture to Mumbai by constructing the first-ever 'Citi Mall' and dome theatre which is one of its kind till date, are some examples of their foresightedness.

Ajmera to Invest \$10m in Start-ups

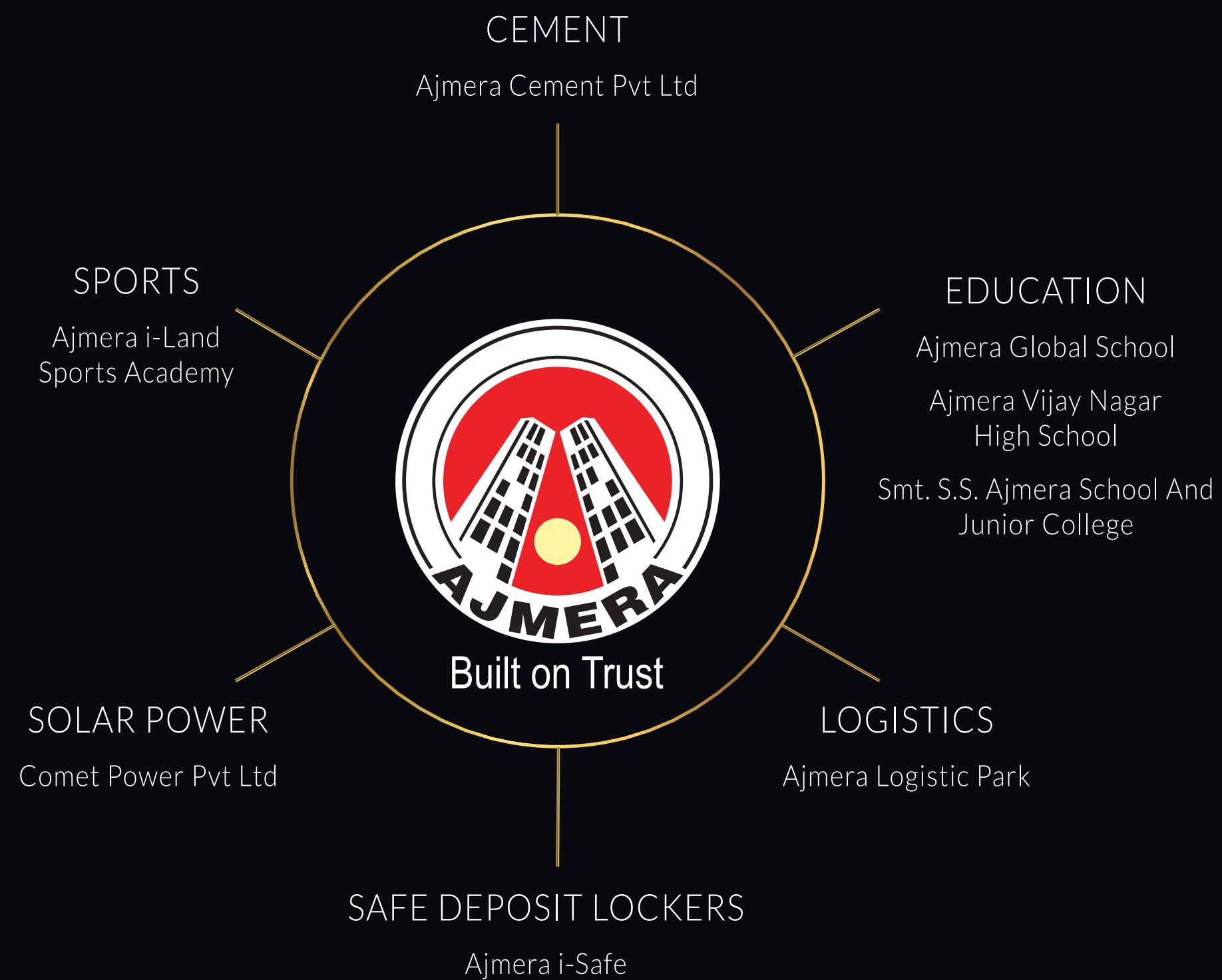
Our Bureau

Bengaluru: Real estate developer Ajmera Group is committing \$10 million to invest in startups, and has already Invested in BookMeIn, Sports Gurukul and Modulex.



The group said it will invest across various sectors such as ecommerce, customer, internet solar and fintech. Founded in 2014, BookMeIn provides a marketplace to connect customers and service providers, scheduling online appointments. Ajmera has also invested in Sports Gurukul —which is about physical education, professional sports and fitness development and training organisation. ModuleX, is a modular kitchen development startup.

FULL SPECTRUM
OF EXCELLENCE



✧

MASTERPIECES CRAFTED TO PERFECTION

✧



Ajmera Exotica - Wagholi, Pune



Casa Vyoma - Ahmedabad



Ajmera Nucleus - Bangalore



Golden Gate - Bahrain



New Era - Kalyan, Mumbai



Ajmera Heritage City - Khardi, Mumbai



Ajmera Aria - Pune



Bishops Avenue - London



King's Borough - London



Ajmera Annex - Bangalore



Ajmera Infinity - Bangalore



Ajmera Lugaano - Bangalore



Calico - Liverpool



Southhall Mens Working Club - London

New Era, Kalyan - Mumbai

A JV of Ajmera & Mehta Group
OC Received

Ajmera Heritage City, Khardi - Mumbai

MAHARERA REG NO. P51700011840

Ajmera Aria - Pune

OC Received

Ajmera Exotica - Wagholi, Pune

MAHARERA REG NO. P52100015618

Casa Vyoma, Ahmedabad

A JV of Ajmera & Sheetal Infra -
PHASE 1 - PR/GJ/ AHMEDABAD/AHMADABAD CITY/ AUDA /
RAA00022/ 290817

PHASE 2 - PR/GJ/ AHMEDABAD/AHMADABAD CITY/ AUDA /
RAA00015/ 280817

Ajmera Annex - Bangalore

Ajmera Annex Residential -
PRM/KA/RERA/1251/310/PR/171014/000288
Ajmera Annex Commercial -
PRM/KA/RERA/1251/310/PR/171014/000302

Ajmera Infinity - Bangalore

OC Received

Ajmera Lugaano - Bangalore

MAHARERA No: PRM/KA/RERA/1251/309/PR/180728/001945

Ajmera Nucleus - Bangalore

MAHARERA No.: PRM/KA/RERA/1251/310/PR/181210/002207

Golden Gate, Bahrain

Highest Residential 2 towers, Bahrain
746 luxury apartmentsThe joint venture between Ajmera, Mayfair &
with
Kooheji Golden Gate (KGG) brings you the finest of living at Bahrain Bay

Upcoming projects in United Kingdom

King's Borough - London

Bishops Avenue - London

Calico - Liverpool

Southhall Mens Working Club - London

The Mill House - Windsor



The Mill House -Windsor



Aeon MahaRERA Reg. No. P51800000789
Zeon MahaRERA Reg. No. P51800000779
Treon MahaRERA Reg. No. P51800000776

Available at website <http://maharera.mahaonline.gov.in>

Site: AJMERA i-LAND, Next to I-MAX Bhakti Park, WADALA (E) | **T:** +91-8970 44 55 00 | **W:** www.ajmera.com

Disclaimer: All specifications, designs, facilities, dimensions etc. are subject to approval of the respective authorities. The developer reserve the right to change the specification or features without any notice or any obligation.